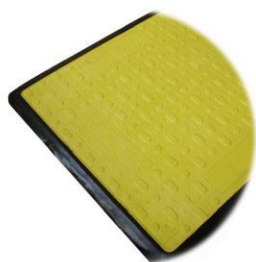




Hengshui Zeqian Technology Co., Ltd



Hengshui Zeqian Technology Co., Ltd







Web: www.draintrench.net

Email: info@draintrench.net



5 polymer concrete drain channel

Loading class:

	A15
	B125
	C250
	D400
	E600
	F900

Channel size:

Code	internal width	external width	external height
HZ1075	100	130	75
HZ1013	100	130	130
HZ1014	100	130	140
HZ1015	100	130	150
HZ1016	100	130	160
HZ1018	100	130	180
HZ1019	100	130	190
HZ1020	100	130	200
HZ1021	100	130	210
HZ1025	100	130	255
HZ1027	100	130	270
HZ1514	150	190	140
HZ1516	150	190	160
HZ1518	150	190	180
HZ1520	150	190	200
HZ1522	150	190	220
HZ1524	150	190	240
HZ1526	150	190	260
HZ1528	150	190	280
HZ2020	200	240	200
HZ2022	200	240	220
HZ2024	200	240	240

Code	internal width	external width	external height
HZ2026	200	240	260
HZ2028	200	240	280
HZ2029	200	240	290
HZ2030	200	240	300
HZ2032	200	240	320
HZ20205	200	250	205
HZ20225	200	250	225
HZ2526	250	290	260
HZ2528	250	290	280
HZ2530	250	290	300
HZ2532	250	290	320
HZ2534	250	290	340
HZ2536	250	290	360
HZ3026	300	340	260
HZ3028	300	340	280
HZ3030	300	340	300
HZ3032	300	340	320
HZ3034	300	340	340
HZ3036	300	340	360
HZ3038	300	340	380
HZ3040	300	340	400
HZ3042	300	340	420

- 1 All the channels can be with ductile iron or galvanized or stainless steel edge.
- 2 All the channels can be with all type cover.
- 3 The connection between the channel and cover can be bolt or lock bar
- 4 Side thickness is 2cm or more, the channel can be with polymer edge. But the connection between channel and cover should be lock bar. But the slotting cover can not.
- 5 The height of the channel can be changed as your need.
- 6 The other size of the channel can be produced as your need. But need to pay mould fee. About the quantity can be discussed.
- 7 Min quantity: 50m



Mould pressing polymer drain channel

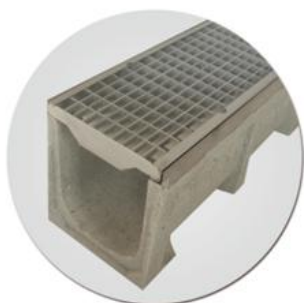
Code	internal width	external width	external height
HZML1010	100	140	100
HZM1015	100	140	150
HZM1020	100	140	200
HZM1520	150	190	200
HZM1525	150	190	250
HZM1530	150	190	300
HZM2008	200	240	80
HZML2019	200	245	190
HZM/L2020	200	240/250	200
HZM/L2025	200	240/250	250
HZM2030	200	240	300
HZM2525	250	300	250
HZM/L2530	250	300/290	300
HZM3030	300	340	300
HZM3035	300	340	350
HZM/L3040	300	340/350	400
HZM/L4040	400	460/480	400
HZM/L4050	400	460/480	500
HZM/L5050	500	580/590	500
HZM/L5060	500	580/590	600

- 1 All the channels can be with all type cover.
- 2 The connectiong between the channel and cover can be steel fram or without.
- 3 Without steel fram, the loading can reach A15 only.
- 4 With the steel fram, the loading can reach C250 class.
- 5 The height of the channel can not be changed as the mould can not be changed.
- 6 The other size of the channel can be produced as your need. But need to pay mould fee. About the quantity can be discussed.
- 7 Min quantity: 50m



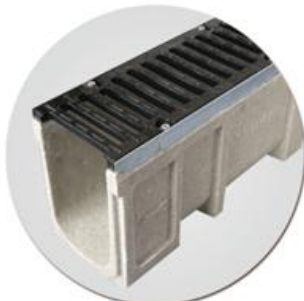
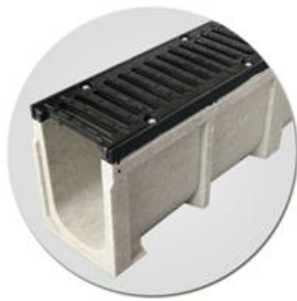
Polymer concrete channel cover:

Grating cover:



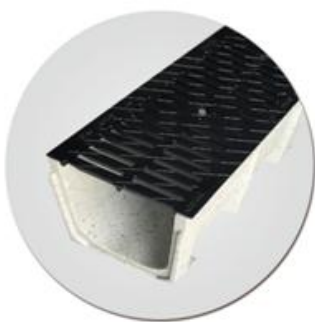
- 1 Loading class can be from A15 to D400
- 2 Material can be stainless steel or galvanized
- 3 The mesh hole can be changed

Ductile iron cover:



- 1 Ductile edge with cover can be from A15 to F900.
- 2 Stainless steel or galvanized edge with cover can be from A15 to D400.

Ductile iron cover:



- 1 The loading class can be from A15 to C250.
- 2 The connection between the channel and cover is lock bar.

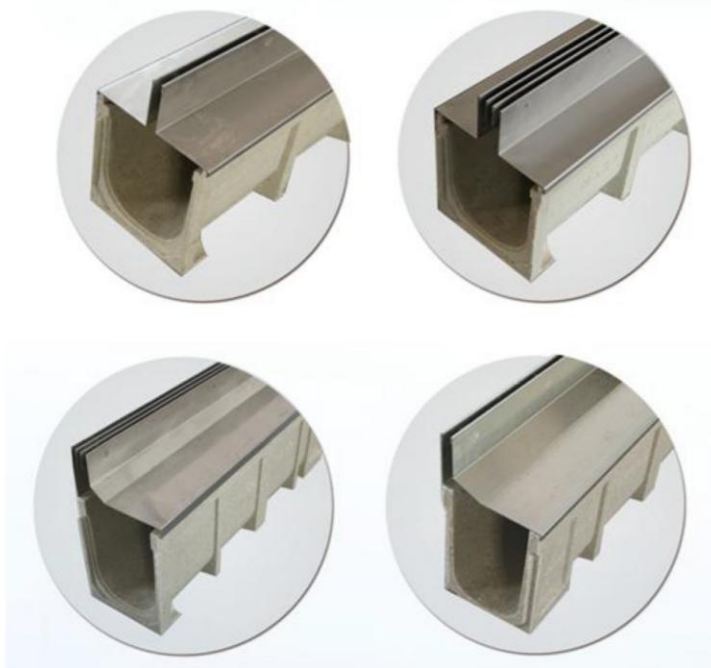
Stamping cover:



- 1 The loading class can be from A15 to C250.
- 2 The connection between the channel and cover is lock bar.



5 Sloting cover:



- 1 The slot can be in the middle or at the side.
- 2 The slot can be one or more
- 3 The slot height will be according to your brick thickness and loading class.
- 4 The cover material can be stainless steel or galvanized
- 5 The loading class can be from A15 to C250 usually. The other loading class can be produced as your need.
- 6 The cover can be as the manhole cover. And the slot can be both sides.

6 Stainless steel drain channel and cover:

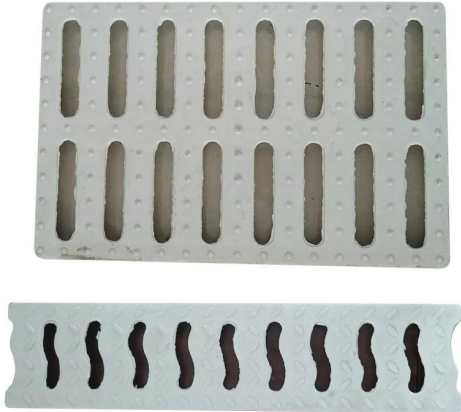


- 1 The channel and cover material can be SS304 or SS316 or SS316L.
- 2 The cover design can be made as your need. Or can make new drawing for you according to your condition.
- 3 The channel and cover length usually are 1000mm or 800mm or 900mm. The other length can be produced as your need.
- 4 The cover type can be produced as your need. And can make new drawing for you.
- 5 The outlet situation and dia can be produced as your need.
- 6 The packing usually is free from fumigation wooden case.



Cover of the mould pressing channel:

7 polymer cover:



- 1 The cover material is polymer.
- 2 The loading class can be A15 only..
- 3 Susally it is used in garden, yard, playground, basketball field, or inside etc.
- 4 it will not rust anytime.

Steel fram:



- 1 it will be used with the covers for the mould pressing channel.
- 2 the fram can be casted into the concrete.
- 3 connect the cover by bolts.
- 4 add the laoding class

Notice :All the mould casting channel drain gratings can be used with the mould pressing channel too.



Plastic drain and covers:



- 1 The cover material can be stainless steel or galvanized or HDPE.
- 2 The loading class can be from A15 to D400.
- 3 The cover type can be same as polymer concrete channel cover.

Polymer concrete pit:



- 1 The polymer concrete pit can be with the riser so that the height is higher.
- 2 The cover of the pit and riser material can be FRP cover or galvanized cover. The cover loading class can be from A15 to C250.
- 3 The words what will be shown on the pit and riser, can be as your need.
- 4 The size of the pit can be 450*450*600mm, 300*300*450mm,
- 5 The other size can be produced as your requirement. But we should make the new mould. Once the total quantity is big, the mould fee can be paid back.



Temporary trench & pit cover:



- 1 The trench cover material is SMC
- 2 The trench cover size can be 1111R, 1208, 1612. The other size can be produced as the requirement.
- 3 The loading can be 350-800kg/625cm².
- 4 The trench&pit cover is molded from a single piece of composite and is easy to move and maneuver.
- 5 Usually the colour of the trench cover is yellow. This colour can be know very easy by the driver.
- 6 The other size and type and sharp can be produced too. We should discuss the details with you and make the new mould.
- 7 Once the total quantity is big. The mould fee can be paid back to you. About the total quantity, we can discuss the details in next step.
- 8 The words and design what was shown on the surface can be made as your requirement in free when the quantity reach one container. But the situration can not be changed.

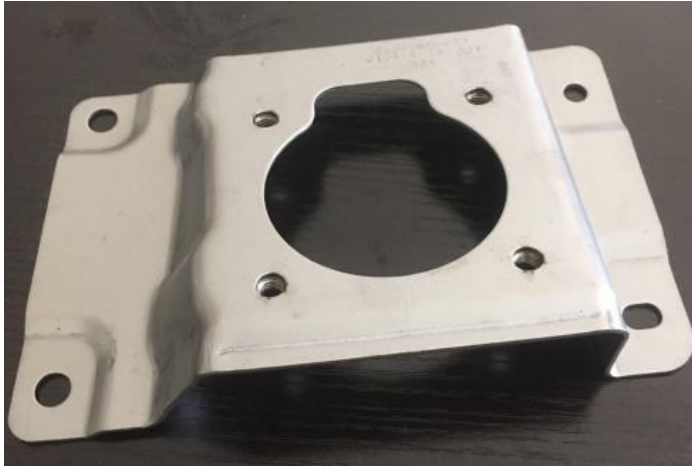
Polymer concrete drain kerb:



- 1 size of the drain kerb:
500*500*150mm
500*300*150mm
The other size can be produced as the requirement. But need to change the mould.
- 2 Two functions in one monolithic element
No loose parts, resistant to attempted theft
Solutions for installations in highways or urban areas
Elements for performing roundabouts, gateways or bus stops
Load class A15 to C250, according DIN EN 1433
- 3 Kerb Drain is a monolithic element that combines a curb and a drainage channel. The system allows for freedom in designing and shaping roadways, parking lots, roundabouts and bus stops.

Punching products:

The punching products material can be galvanized or stainless steel. And all most are produced as your drawing.





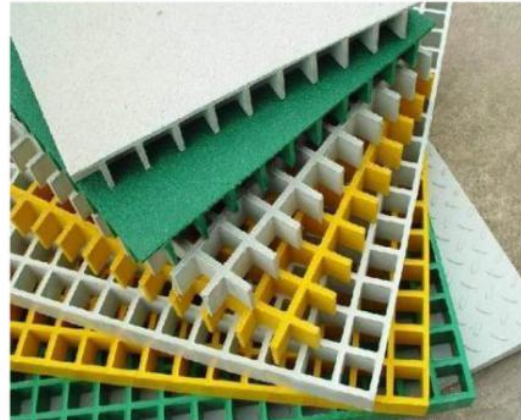
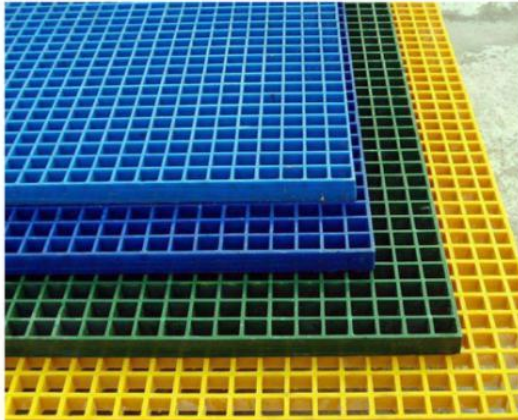
12 Painting access door



- 1 material: carbon steel or stainless steel
- 2 surface: painting or without
- 3 Door material thickness is 16gage or 14gage or according to the inquiry.
- 4 Specification: 12"X12", 14"X14", 16"X16", 18"X18", 24"X24", 36"X36". The other size can be produced as the requirement.
- 5 Installation: cell or wall
- 6 Finish colour: usually it is white colour. The other colour can be as the requirement.
- 7 Packing: carton box then wooden pallet or carton box then wooden case.
- 8 The other design can be produced too.

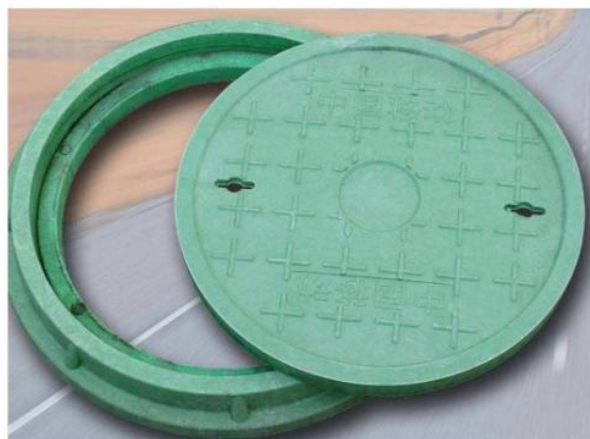


1 FRP grating



Hole and thickness	The sheet size
40*40*15mm	1*4.04m
40*40*20mm	1*4.04m
38*38*25mm	1.22*3.66/1.22*4.04/1*4m
19*19*25mm	1*4m
25*25*25mm	1.22*3.66m
38*38*30mm	1.22*3.66m
50*25*30mm	1.22*3.66m
38*38*38mm	1.22*3.66/1.22*4.04m
19*19*38mm	1.22*3.66
50*50*50mm	1.22*3.66/1.22*4.04m
38*38*65mm	1.22*3.66m

2 FRP manhole cover:





Φ1000/15T	φ700/80T
φ900/60T	Φ700/50T
φ900*40T	Φ7001T
φ900/50T	Φ650/8T
Φ800/50T	φ600/40T
Φ800/40T	φ600/30
Φ800/25T	φ600/10
Φ800/15T	φ600/2
Φ800/10T	φ500/20
Φ800/3T	φ50/10
φ750/80T	φ400/5
φ750/60T	φ300/10
φ750/15T	

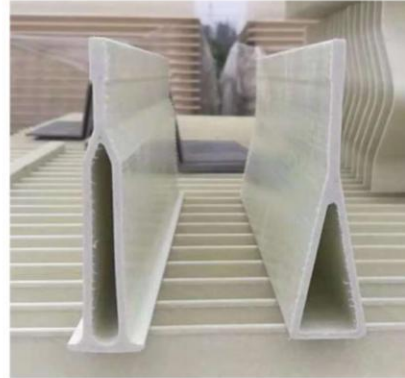
3 FRP rain-water grating:



Specification (L*W*T)

600*600*50	600*600*40	500*500*50
500*500*40	500*500*30	480*600*40
450*750*40	400*600*60	400*600*50
400*600*40	400*600*30	400*500*50
400*500*40	400*400*40	380*680*55
380*680*40	350*500*50	350*500*40
350*500*30	350*500*50	350*500*40
350*500*30	350*500*20	300*450*40

4 FRP section bar:



FRP U Channel :

200*100*9	80*40*4
180*50*8	80*42*5
160*70*9	140*60*3
150*60*8	70*30*4.5
100*50*6	60*50*5
88*30*5	

FRP I Beam:

200*100*10	50*25*15*4
150*150*7.2	38*15*4
150*100*6.5	33*20*4
110*50*6	30*20*10*4
70*30*4	25*40*4
65*25*3	25*15*4
58*15*4.5	

FRP Square pipe:

150*150*4	50*50*4
120*120*5	50*50*5
100*100*5	40*40*4
100*100*2.7	40*40*2.7
80*80*3.5	40*40*3.5
70*70*4	30*30*3.1
60*60*5	25*25*5

FRP rectangle tube:

180*60*4	63.5*37*3.5
160*60*4	60*30*3
140*60*3	60*30*2.7
120*3.5*60*3	60*35*3
100*50*5	86*32*3
90*4*40*5	48*32*3
90*4*40*7	48*28*3
75*3*35*6	



FRP round pipe:

Φ80*70*5	φ46*42*2	φ31*25*3
φ65*57*4	φ40*32*4	φ21.5*16.5*2.5
φ60*50*5	φ55*45*4.5	φ25*20*2.5
φ50*40*5	φ38*31.8*3.1	φ19*12.5*3.25
φ50*42*4	φ52	φ31*5
φ48*38*5	φ32*28*2	

FRP pipeline 0.6Mpa:

DN50mm	DN500mm
DN65mm	DN600mm
DN80mm	DN700mm
DN100mm	DN800mm
DN125mm	DN900mm
DN150mm	DN1000mm
DN200mm	DN1200mm
DN250mm	DN1400mm
DN300mm	DN1500mm
DN350mm	DN1600mm
DN400mm	DN1800mm
DN450mm	DN2000mm

FRP round bar:

φ8
φ10
φ12
φ14
φ16
φ20
φ25
φ50

FRP angle bar:

50*50*5
40*40*4
30*30*3

FRP gear tube: 25*36mm



Notice: 1 The other size of all the section bar can be make new mould for you as your requirement.

2 The other sharp can be produced as your requirement. But need to make new mould.